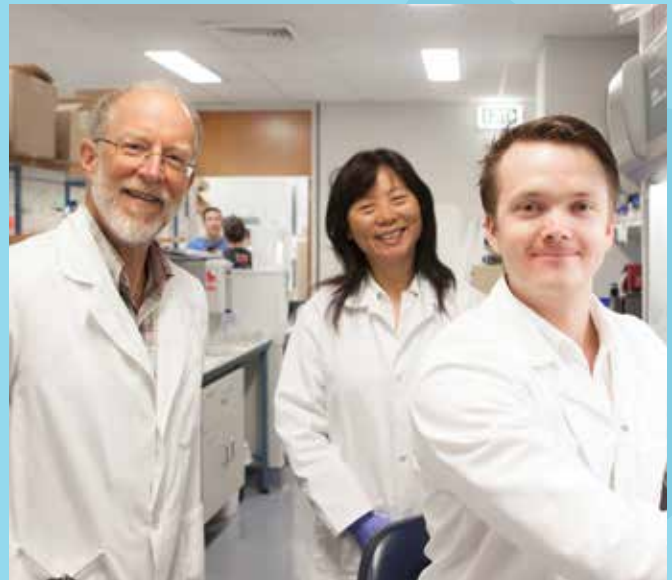


# Annual Report 2013/2014

Cancer Society of New Zealand  
Auckland Division



AUCKLAND DIVISION



## Our Vision Tō Mātou Koromakinga

The leading organisation dedicated to reducing the incidence of cancer and ensuring the best cancer care for everyone in New Zealand

Ko te whakahaere arahanga e pūmau ana ki te whakaiti i te pupūtanga o te matepukupuku me te whakarite i te atawhai pai rawa atu mō ngā tāngata katoa ki Aotearoa

## Our Mission Tō Mātou Matapae

Improving community well-being by reducing the incidence and impact of cancer

Te whakapai ake i te oranga hapori mā te whakaiti ake i te pupūtanga me te pānga o te matepukupuku

## Contents - Annual Report 2013/2014

President Report.....	Pg 2
The Board.....	Pg 3-4
Cancer Today.....	Pg 4
Supportive Care.....	Pg 5
Accommodation.....	Pg 6
Auckland Cancer Society Research Centre.....	Pg 7-8
Health Promotion.....	Pg 9-10
Northland Highlights.....	Pg 11
Northland Regional Committee.....	Pg 12
Committee Members.....	Pg 13
Thanks To Our Community.....	Pg 14
Trusts And Foundations .....	Pg 15
Fund Income and Allocation.....	Pg 16
Organisational Structure.....	Pg 17
Summary Financial Statements.....	Pg 18-19
Audit Report.....	Pg 20
Annual Report Supplement Q & A.....	Pg 21

## Nigel Brown President Report



Greetings, it is again my pleasure to report to you as President of the Cancer Society of New Zealand Auckland Division about the significant happenings and results from the 2013/2014 year. The past 12 months have been one of great progress and change within our organisation, especially across the three core service areas of Research, Health Promotion and Supportive Care.

On the day you are reading this report some 60 New Zealanders will receive the news that they have a diagnosis of cancer. We know this because this is what happens every single day. Our efforts in cancer prevention to reduce this number via Health Promotion have been significant. The Cancer Society has been instrumental in shifting the Auckland Council and several Northland Councils towards the goal of a Smokefree New Zealand by 2025. We have successfully advocated for changes in Council thinking leading to changes in policy. Our Sunsmart Schools programme is also creating a healthier future for children.

At the coal face is our Supportive Care team. This group provides a suite of services that we feel are vital at meeting the needs of patients, family and whānau. Our annual report speaks about the volume of service provided but we are equally proud of the quality of service and the benefits to those in need. Whether it is a session with one of our clinical psychologists or perhaps being driven to a medical appointment by one of our committed volunteers, every day we see the practical difference that is made. Liaison nurses supporting patients in their own homes, the provision of award winning information or the fine accommodation we provide here at Domain Lodge are all offered free of charge as a result of the support we receive from our generous community.

Financially our year was a successful one and the recorded surplus was higher than had been expected in our budget. A consistent feature in recent years has been our ability to control expenditure and to apply funding where it is needed most. Income from bequests was at one of the highest levels we have experienced and we are humbled by the generosity of those who have the foresight to provide for the Society within their Estate. The vision of these good people matches that of the whole organisation as we strive to reduce the incidence and impact of cancer. We were also proud to hold the inaugural Ride to Conquer Cancer event in November 2013. Together with 662 other riders, I made the 200km journey over what was just an outstanding weekend. The event itself was near faultless and we were thrilled that \$2.3m was raised in support of our medical research programme. We go again in 2014 and the hope is that the Ride will grow and sustain this all important research work for the future. We are grateful for the new association we have with Ryman Healthcare, and our partnership with the ANZ goes from strength to strength and their support provides a firm footing for our organisation.

The Cancer Society looks to the future with confidence. We note the evidence that numbers of cancer patients and the complexity of their diagnosis will increase. We are also aware that cancer survival rates are increasing and that there will be more people needing our services in the years to come. The desire for a Smokefree nation in 2025 motivates us in our cancer prevention work. Researchers at the Auckland Cancer Society Research Centre are playing their part with ground breaking work investigating the causes and treatments of cancer. This group continues to innovate and excel in this most challenging field of medicine. The achievements of our key areas are well covered in this report.

In conclusion I would like to extend my thanks to my fellow Board members. In particular I would like to acknowledge the contribution of the respective Chairs of our advisory subcommittees; Stuart Bauld (Audit) Shaun Laffey (Finance), Dr Tom Marshall (Health Promotion) and Alex Ng (Supportive Care). To John Loof our CEO and his dedicated staff, I also offer my congratulations on the achievements over the past year. A special thanks to all our volunteers, the many thousands of you who contribute so much at so many levels. Finally, to our members, donors and supporters. Your gifts make a real difference to reducing the incidence and impact of cancer within our community and create hope for the future.

Nigel Brown – President

# The Board



**Mr G Nigel K Brown**  
(President), BCom, ACA

An Accountant in private practice, Nigel has over the last thirty years been involved in a number of not-for-profit organisations and has been the Peoples Warden of the St Aidans Church. His involvement with the Cancer Society Auckland began in 2003 when he was appointed to the Divisional Board, and was elected Vice President in 2008, and President in 2012. He is a member of the Finance Advisory Committee, 2003 to present, and Chairman from 2006 – 2012. In 2008 he was appointed as a Trustee of the Davis Carr Cancer Society Endowment Trust.



**Mr Stuart E Bauld**  
(Vice President), BCom

Stuart is a Chartered Accountant, Business Adviser and Company Director. A retired partner in a major accountancy firm, he combines his business affairs with work for community organisations. In 2006 he joined the Cancer Society Auckland Board and Finance Advisory Committee and is Chairman of the Audit Committee, and was elected Vice President in 2012.



**Associate Professor Jonathan B Koea**  
(Vice President), MD, FACS, FRACS

Jonathan (Ngāta mutunga, ngāta tama) is a Hepatobiliary Surgeon at North Shore Hospital with an interest in primary and secondary cancers of the bile duct. He graduated from Auckland Medical School in 1989 and worked in Auckland, Hamilton and the Hawke's Bay before undertaking post graduate training at New York's Memorial Sloan-Kettering Cancer Centre. Jonathan joined the Cancer Society Auckland Board in 2001, was elected Vice President in 2009 and is a member of the Finance Advisory and Medical Advisory Committees.



**Dr Tom H Marshall**  
OBE, MB, ChB, Dip.Obst, FRNZCGP

Tom is a retired general practitioner who became involved in cancer care in the early 1970s prior to the establishment of St Joseph's Mercy Hospice. He is an Honorary Clinical Associate Professor at the University of Auckland, a Fellow of the Royal New Zealand College of General Practitioners, and a Fellow of the New Zealand Medical Association. He received the OBE in 1996, for services to medicine and the community. Tom has been on the Cancer Society Auckland Board since 1997 and is Chair of the Health Promotion Advisory Committee.

The work of the Auckland Divisional Board is made possible through the skills of 14 committed individuals, all with highly relevant medical, commercial or legal expertise.



**Professor Peter Browett**  
B, Med, Sc, MBChB, FRACP, FRCPA

Peter is a Consultant Haematologist at Auckland City Hospital and Professor of Pathology and Chair of the Department of Molecular Medicine and Pathology, Faculty of Medical and Health Sciences, University of Auckland. He is involved in co-operative group clinical studies and leads a research group. He joined the Cancer Society Auckland's Board in 2000 and is Chairman of the Medical Advisory Committee.



**Mr Mac Leauanae**  
MBA, LLB

Graduating from the University of Auckland with a law degree, Mac practiced for a year and a half before realizing that law was too narrow for him. With a desire to assist Pacific communities, he moved into Pacific community development and business development through his work at the Pacific Business Trust. He then moved into the healthcare sector. He joined the Cancer Society Auckland Board in 2009 and is a member of the Health Promotion Advisory Committee.



**Professor Michael P Findlay**  
MBChB, MD, FRACP

Michael is Chair of Oncology in the Faculty of Medical and Health Sciences at the University of Auckland and a visiting Medical Oncologist at Auckland City Hospital. He is well published and serves on the Board and Scientific Advisory Committee of the Australasian Gastro-Intestinal Trials Group. Michael is currently Director of Cancer Trials New Zealand. He joined the Cancer Society Auckland Board in 2006.



**Mr John R Whittaker**  
MBChB, Dip Obst, MRCOG, FRANZCOG

John practises as a Gynaecological Oncologist and also works at the Women's Cancer Centre of NZ at Ascot Hospital where he has been actively involved in clinical pathological review of gynaecological cancers for some years. A member of the Cancer Society Auckland Board since 2000, he serves on the Medical Advisory Committee.



**Mr Alex Ng**  
BHB, MBChB, FRACS

Alex is a Breast and General Surgeon at Auckland City Hospital and a Co-Director of Breast Associates. He is a graduate of Auckland Medical School, and has a special interest in breast cancer and melanoma treatment. Alex is a member of the Auckland Breast Cancer Study Group, and Vice President of the Auckland Chinese Medical Association. Alex joined the Cancer Society Auckland Board in 2009, and is chairman of the Supportive Care Advisory Committee.



**Mr Shaun P Laffey**  
MCom (Hons in Economics), FACA

Formerly the National Bank's Auckland General Manager, Shaun has held a number of Directorships in private companies. Currently he acts as an expert witness in banking and finance cases. Shaun was elected to the Cancer Society Auckland Board in 2008, is Chairman of the Finance Advisory Committee and member of the Audit Committee, and Auckland Cancer Society Research Centre's Joint Management Board.



**Mrs Leah Watson**  
QSM, BA, B. Com, CA (ICANZ), CFP, AFA, TEP

Leah is a Financial Advisor with Spicers Portfolio Management, and Consultant for BDO (Bay of Islands). She has been Chair of the Kerikeri Fitness Centre, a Trustee of the Kerikeri Sport and Recreation Trust, Treasurer on the National Board of Zonta International, a foundation Trustee of the Zonta National Trust, and a Director of The Centre at Kerikeri Ltd, a trustee of the Kerikeri Civic Trust and ARTSXL Charitable Trust. She was awarded a QSM for community services in 2006. Leah joined the Cancer Society Auckland Board in 2006 and is Chair of the Northern Regional Committee, and a Trustee of the Davis Carr Cancer Society Endowment Trust.



**Dr Paul I Thompson**  
BHB, MBChB, MD, FRACP

Paul is a Clinical Director of Medical Oncology at Auckland City Hospital. He has a particular interest in the research and treatment of gastrointestinal cancers and currently chairs the National Gastrointestinal Cancer Interest Group and the Specialist Advisory Committee in medical oncology of the College of Physicians. He joined the Cancer Society Auckland Board in 1997 and is a member of the Auckland Cancer Society Research Centre's Joint Management Board.



**Mr Paul B Shanahan**

Former Creative Director, partner and CEO of a number of advertising agencies, Paul has been responsible for creating widely recognized and award winning advertising campaigns throughout his 40 year career. Currently Paul is a Marketing Director of a large, privately owned land development company involved in a variety of foreign and local initiatives. Paul was invited to join the Cancer Society Auckland Board in 2011 to provide communication / publicity guidance.



**Mr Bruce Macdonald**  
MA (Hons) Dip Soc Wk LLB DPH

Bruce has qualifications and work experience in law, public health and social work. After practising as a commercial lawyer, he moved into health funding and planning, and managed the Ministry of Health's Public Health Team in the Northern Region. He is currently a consultant, working mainly in the health sector, and is Treasurer for the Auckland Branch of the Public Health Association of NZ. Bruce joined the Cancer Society Auckland Board in 2013, and is a member of the Supportive Care Advisory Committee.

# Cancer Today

29%

29% of all deaths are caused by cancer.

8,593



There are over 21,000 new cancer diagnoses each year. The most common cancer diagnoses:

● Prostate 14% ● Colorectal 14% ● Breast (Female) 13%

21,000

19%

Lung cancer is the leading cause of cancer deaths, causing 19% of cancer deaths. Followed by colorectal, prostate and breast cancer.

1,650



Cancer deaths are significantly higher in the Northland Region.\*

\* Major sites by DHB region of residence 2009



Source: Ministry of Health. 2013. Cancer: registrations and deaths 2010. Wellington: Ministry of Health. At the time of printing, the 2010 data was the latest confirmed data. For further information and statistics visit [nzhis.govt.nz](http://nzhis.govt.nz)

# Supportive Care Future Challenges



Michelle Gundersen-Reid,  
Supportive Care Manager

During 2013, the need for services continued to grow with a 13% increase in referrals to our Cancer Society Liaison Nursing service and a 49% increase in group session attendees with our Psychology service. Calls to the Cancer information Helpline increased by 5%. As a result of this increased growth there has been added resource put into services this year. The need for support will keep growing with regional population growth and an aging population. Advances in medical treatment mean people are being diagnosed earlier and are receiving longer and more complex treatment regimes. We continue to aim to reach communities in our region to ensure they have access to the assistance we offer.

# Supportive Care

We remain committed to providing professional, practical and compassionate support when people face a diagnosis of cancer, while going through cancer treatment, and as they plan for their future. People living with cancer, their family, whānau and supporters tell us that our personalised support, both practical and emotional was what got them through.



## Community Liaison Nursing



## Cancer Information



## Counselling and Psychology

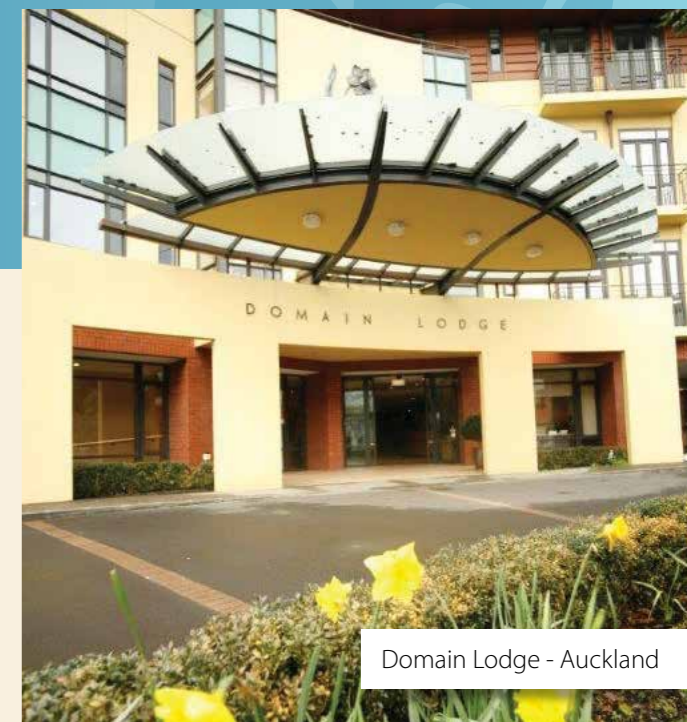


## Support Volunteers

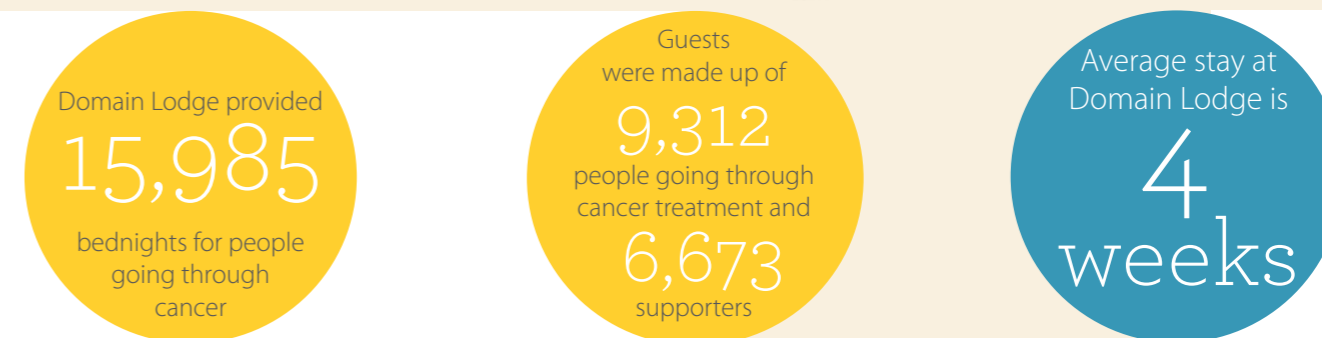


# Accommodation During Treatment

Located across the road from Auckland City Hospital's Oncology Centre, Domain Lodge serves as an accommodation facility, providing 54 rooms to accommodate people who must travel long distances to receive treatment in Auckland. Domain Lodge was purpose built to provide a 'home away from home' atmosphere including a shared lounge and dining area, as well as a fully functioning communal kitchen. These shared facilities enable support and friendship within the Lodge with potluck dinners and morning teas arranged to introduce guests to one other.



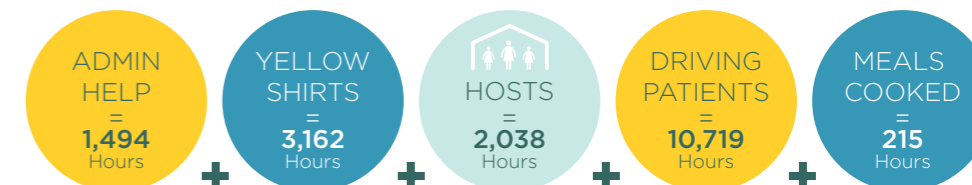
Domain Lodge - Auckland



# Volunteering

Volunteers are vital. They help raise money and work in programmes that allow Cancer Society to provide services that would otherwise not be possible. With the support of volunteers, Cancer Society is able to make a real difference in the community, and in the lives of the thousands of people affected by cancer each year.

## LAST YEAR VOLUNTEERS MADE A HUGE IMPACT TO SUPPORTIVE CARE:



# Auckland Cancer Society Research Centre



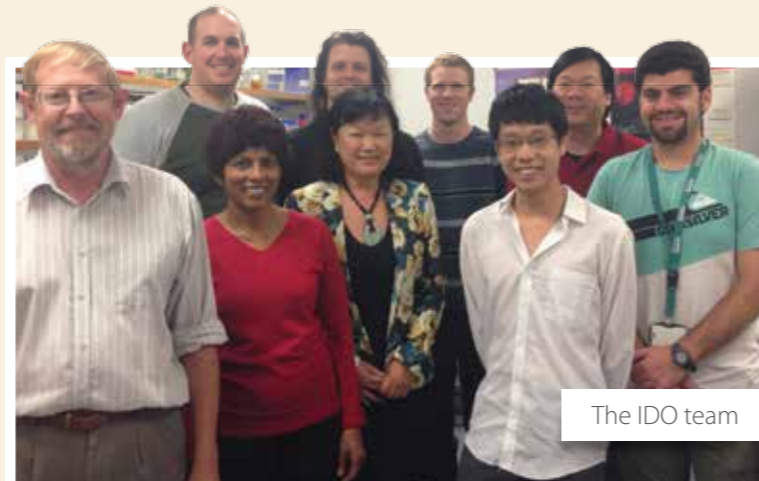
The Auckland Cancer Society Research Centre (ACSRC) was set up by Cancer Society Auckland in 1956 by some far-seeing people, with a primary mission to develop new drugs for cancer therapy at a time when cancer treatment by drugs was in its infancy. This has remained its main purpose over the years, during which time the drug research focus worldwide has continually changed, as we learn much more about the multitude of diseases that we collectively call cancer, and define the differences between them.

Thus our early research focused on drugs that targeted the cell's ability to make the critical information molecule DNA. These were general cell toxins that were effective against fast-growing cancers but which affected all dividing cells to some extent. The current predominant drug design theme, enabled by detailed knowledge about specific enzymes that are mutated or over-produced in different cancers, are "targeted drugs" that inhibit such altered enzymes that drive cancer growth.

This class of drugs, particularly the broad range of inhibitors of cell signalling enzymes known as kinases, are gaining a major role in cancer therapy. Very recently, as we understand more about the immense complexity of the immune system, research on drugs that can exploit or strengthen components of this is expanding, with antibodies such as Herceptin coming into clinical use, and many more in trial. This change is also reflected in a number of recent research projects in the ACSRC, as outlined below:

## Inhibitors of indole dioxygenase for the treatment of melanoma

New Zealand has the world's highest incidence of malignant melanoma, making the development of more effective treatment of particular relevance. The enzyme indole-2,3-dioxygenase-1 (IDO-1) is a regulator of the immunosuppressive mechanisms that allow cancer growth, so that inhibitors of IDO-1 have the potential to improve the body's immune response to melanoma. Work on this project in the ACSRC over the last several years setting up assays and screening for active compounds has resulted in three interesting series which are now being developed towards a potential candidate for preclinical development.



The IDO team



Co Director of Auckland Cancer Society Research Centre  
Prof. Bill Denny



Auckland Cancer Society Research Centre, Auckland University Medical Faculty, Opp Domain Lodge and Auckland City Hospital

## Inhibitors of perforin to enhance transplant therapy for leukemia

Transplants of bone marrow stem cells can be a successful treatment for leukemia, but they do require immunologically well-matched donors, which are often hard to find. If there is imperfect matching the recipient's immune system will release an enzyme called perforin to quickly kill the "foreign" donor cells before they can engraft. As part of an international project, ACSRC scientists are developing the first inhibitors of perforin function to counter this response, with the aim of allowing a wider range of donors to be successfully used.



The perforin team

## Antibody-drug conjugates for the specific delivery of toxins to cancer cells

A new way to deliver toxins much more specifically to cancer cells is to link them to antibodies (immune system proteins that themselves bind very selectively to cancer cells) in a manner by which the toxin is released, in the right place, only when the antibody binds. The first two successful "antibody-drug conjugates" (ADCs) have recently been approved for use and, many others are in development. ACSRC scientists are using a novel toxin developed here to construct new ADCs, in collaboration with a US pharma company, and several of these are now in advanced biological testing.

## Grant success for ACSRC researchers

Cancer Society Auckland contributes critically-important core funding to the ACSRC (about 20% of its budget). The bulk of the rest comes from grants and contracts won by staff. In the last year these have included a 5-year programme grant (on kinase inhibitors), three 3-year project grants and two International Collaboration grants from the Health Research Council of NZ, as well as three Marsden Fund grants, together with a grant from the US NIH and research contracts from international companies and organisations.



The ADC team

## Award to ACSRC researcher

ACSRC researcher Prof Bill Denny was named by the American Chemical Society as the recipient of their 2014 biennial Medicinal Chemistry award for "recent research that has had a significant influence on medicinal chemistry". This is the first time in more than 30 years that the award has been given outside the United States.

# Health Promotion



The Health Promotion team work to create a future with less cancer for our children and grandchildren. To do this we work strategically with decision makers such as MPs and Council to create policy and legislation that will improve the health of Aucklanders. Alongside our Smokefree Auckland campaign, we have focused on the availability of cigarettes in our community as well as plain packaging in order to prevent our children from starting to smoke. We're looking ahead to when the Government's goal of a Smokefree NZ by 2025 will be achieved – this will mean that 4000 NZ children will not start smoking every year and that 5000 New Zealanders will not die from a smoking related illness. What an amazing vision for us all to be working towards.

## Key areas of focus for 2013/14:

### Working towards a Smokefree Auckland

Creating Smokefree public places is about denormalising smoking and supporting our children to grow up Smokefree. Previously we worked with Auckland Council to set a Smokefree vision and policy for our city within their key planning documents such as the Auckland Plan and the Long Term Plan. This year CSA continued its leadership in this area by supporting Auckland Council to begin implementing the Smokefree policy which was adopted last year. This means you will start to see more Smokefree signs and hear more Smokefree messages in your local community.

### International event on cigarette availability

Reducing the availability of cigarettes in our communities is very important as currently there are almost no controls on how and where tobacco can be sold. In particular there are concerns about the number of places selling tobacco around schools as this has been linked to children starting smoking and being more likely to purchase cigarettes underage. A key highlight over 2013/14 year in Health Promotion was hosting an international event to discuss cigarette availability in a local government context. The event was hosted as part of the bi-annual Oceania Tobacco Control Conference held in Auckland in November 2013. The event was co-hosted by Te Ara Hā Ora (National Māori Tobacco Control Service) and opened by Ngāti Whātua. Politicians, advocates and researchers from across New Zealand and the Pacific came together to progress the potential new area of the role of local government in controlling the availability of cigarettes.

### The campaign for Plain Packaging of cigarette packets

Cigarette packaging is a powerful marketing tool specifically aimed to appeal to children and young people. Plain packaging means removing the attractive branding from cigarette packets and making the health warnings bigger, thus reducing the appeal of cigarettes. This year we supported the adoption of this legislation through supporting communities to get engaged with the process and write submissions. In addition, we supported Auckland Council and the Youth Council to make a submission in support of plain packaging. This is particularly powerful given Council is the second largest decision making body in New Zealand.

### SunSmart Schools Accreditation Programme

The Cancer Society continues to be the key agency working in SunSmart in New Zealand. Protecting our children from the sun while at school is really important particularly over peak times at summer. This year Cancer Society has supported an increased number of schools to become SunSmart. A total of 14000 students in Auckland are now covered by a SunSmart schools policy.

### Looking towards 2014/15

The key focus for the next year will be to:

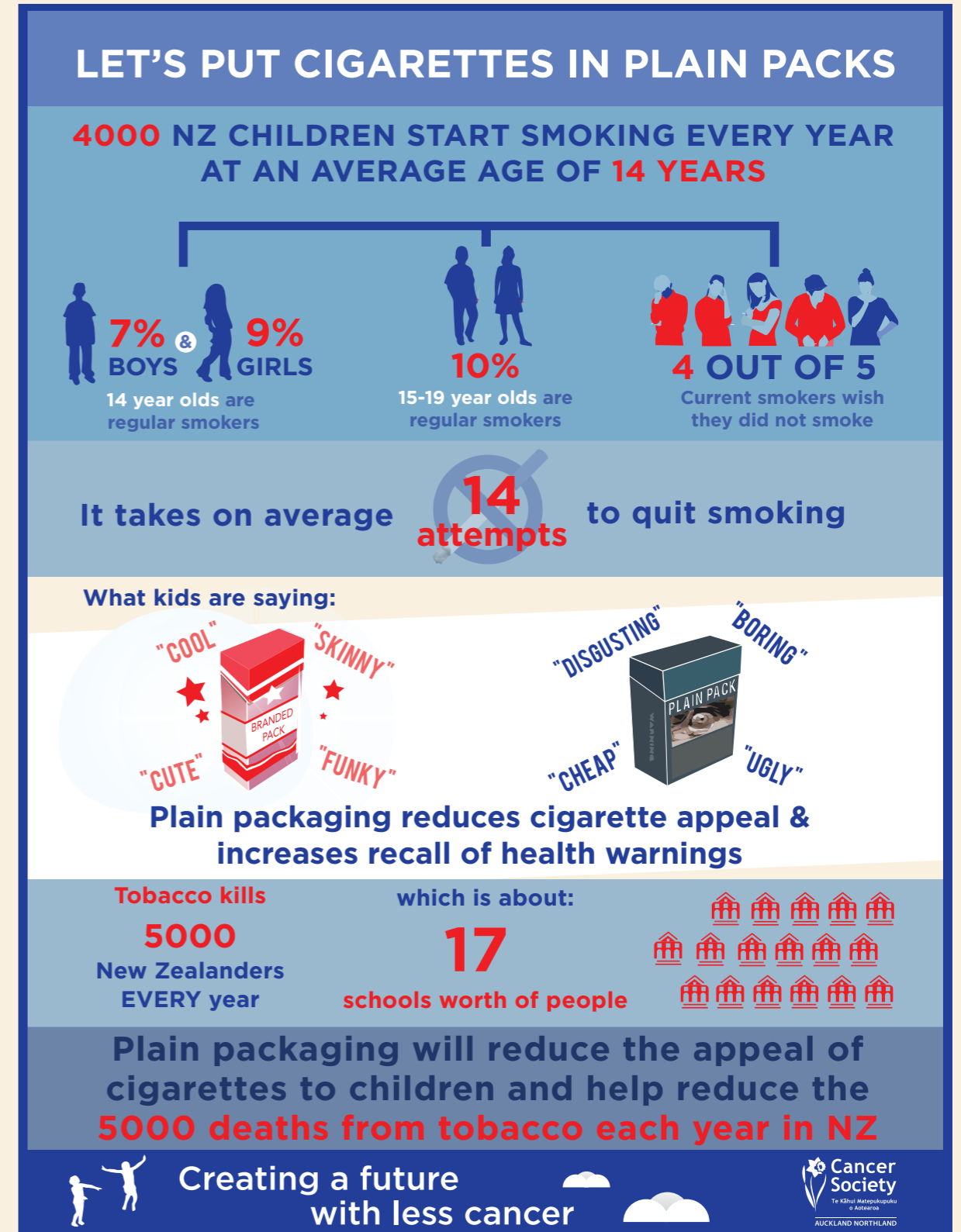
- Ensure that Local Boards and Council effectively implement the Smokefree Auckland policy including exploring new areas such as outdoor dining
- Support plain packaging legislation to be adopted as soon as possible
- Develop a Smokefree bylaw model to feedback to Auckland Council
- Develop and share new curriculum resources and successes of other SunSmart schools



The Health Promotion Team - from left to right: Camilla Gould, Beth Jenkinson & Kristina Marck

# Smokefree New Zealand by 2025

This plain packaging infographic illustrates the importance of this strategy for reducing uptake of smoking for young people and creating a future with less cancer for future generations. Steps like plain packaging are critical for achieving a Smokefree New Zealand by 2025.



# Northland Highlights 2013-2014

Providing Cancer Society services across a widespread rural community is challenging. However, Cancer Society Northland continues to make significant progress in both Health Promotion and Supportive Care.

Cancer Society Northland has again provided support to an increased number of people going through their cancer diagnosis and treatments and to their families, and has had great success, in collaboration with other Non Government Organisations (NGO's), Smokefree providers and Local Authorities, to progress towards a Smokefree Northland by 2025. Cancer Society Northland continues to work very closely with staff in the public health sector and other NGO cancer service providers, education providers and Local Authorities.

Contributions from the Northland community, both in the provision of volunteer hours and to the many fundraising appeals and events throughout the year, have once again shown Northlanders are incredibly generous in their support.

## Supportive Care

There has been an increase in referrals and activity in this area with **415** newly diagnosed people from across the wider Northland community being supported by our 3 Cancer Society Community Liaison Nurses. They made **653** home and community visits and **4146** phone calls related to this support.

These increases are an indication of the important relationships established with referrers and a stronger organisational profile in the community. Referrals were also made to community counselling services and accommodation provided in Whangarei and to peer support groups that continue in several Northland communities.

## Health Promotion

With all three Northland District Councils having introduced Smokefree parks, playground and sports grounds policies in 2012 progress is now being made to extend this to other public places such as Whangarei bus stops and CBD's as we continue to move towards the Smokefree 2025 goal. Strong relationships are being established with new council members following the 2013 elections as we all work towards this goal. There has been an increase in the number of Northland retailers that have chosen not to sell tobacco products to their communities.

SunSmart activity has seen the introduction of sun protection policies by more organisations, sport and community groups and **57%** of Northland Primary Schools are now involved in the SunSmart Schools programme.

## Fundraising

Daffodil Day 2013 was again a great success but unfortunately, yet again Relay For Life was impacted by cyclonic weather. Despite the weather we still managed to have a 9 hour event with many supporters on the track for the whole 9 hours. These two events, together with other events such as our Xmas Santa photo opportunity & gift wrapping in The Strand Arcade, Whangarei contributed to the funds raised.

Thanks to everyone across Northland who supports these activities each year, as well as the Trusts and organisations acknowledged on page 17.

## Volunteering

Cancer Society Northland could not function without the tremendous support we receive from our volunteer Regional Committee members, regular office volunteers and all those casual volunteers who together gave a documented **1,820** hours and many more uncounted hours in support of all aspects of our activities. A huge thank you must go to all those who support our work by volunteering, we couldn't do it without you.



Daffodil House - Whangarei

# Northland Regional Committee

The work of the Northland Regional Committee is made possible through the skills of 8 committed individuals, all with highly relevant medical, commercial or legal expertise.

This volunteer committee has the responsibility of bringing the voice of their community to the attention of CSN and the Board of the Auckland Division and to be the voice of CSN and organisational services in these communities.

## Mrs Leah Watson

QSM, BA, B.Com, CA (ICANZ), CFP, AFA, TEP

Leah is a Financial Adviser with Spicers Portfolio Management and Consultant for BDO (Bay of Islands). Leah has represented the Mid North on this committee since its establishment 1999 and as and as current Chair has represented Northland on the Cancer Society Auckland's Board since 2006. Leah is also a Trustee of the Davis Carr Cancer Society Endowment Trust.

## Mrs Elizabeth (Betty) Morgan

QSM, NZRN, JP

Betty is a retired Nurse and past Councillor on the Whangarei District Council. Betty is a founding member of the Cancer Society in Northland and past Chair of the Regional Committee. Betty represents the Whangarei community.

## Mr Kim Allen

ACIS (retired), Member of the Order of St John

Kim is a retired Chartered Accountant with forty years in Public Practice. Kim has represented the Kaipara community on this committee since establishment in 1999.

## Mary Carthew

RN, PGDip (Leadership in Health Practice), MHSc (Hons)

Mary's current role, Associate Director of Nursing: Primary Health Care, is a joint appointment with the Northland DHB and Manaia Health Primary Health Organisation. Mary represents the Whangarei community and brings her nursing expertise to this committee.

## Lee Iwashita

Lee is the Centre Manager at the Public Trust office based Whangarei but covering all of Northland. Lee brings a strong business focus to the committee and also represents the interests of the Whangarei community.

## Ada Brown

Ada is a cancer survivor and joined the Reg Committee to represent the interests of the South Hokianga and Kaikohe communities. Ada is very involved in her marae and Māori community and brings this perspective to the work of Cancer Society Northland.

## Jane Howes

Jane is a community nurse employed by Hokianga Health Trust and represents her North Hokianga community. Jane is a strong advocate for people who live in remotes rural locations isolated from care and support.

## Marie Berghan,

ABINZ, NZ Di Bus

Marie is currently a Tutor in Business and Computing Programmes at the NorthTec Kaitia campus as well as being involved in several other local community support networks. Marie represents the Far North community.

## Glen Hardam

Glen was Regional Manager of Retail for ANZ Bank in Northland and joined the Regional Committee in 2013 as the representative of the ANZ, a key sponsor particularly in support of Daffodil day activities.

## John Loof, CEO, Cancer Society Auckland Northland

## Margaret Curry, Manager Cancer Society Northland



Back Row: Lee Iwashita, Marie Berghan, John Loof, Mary Carthew & Kim Allen  
Front Row: Heather McVicar, Leah Watson, Elizabeth Morgan, Glen Hardam & Margaret Curry

# Committee Members

## as at 31 March 2014

### Finance Advisory Committee

Mr Shaun Laffey (Chair), Mr Nigel Brown, Mr Stuart Bauld, Associate Professor Jonathan Koea Ex-officio: Financial Controller.

### Audit Committee

Mr Stuart Bauld (Chair), Mr Nigel Brown, Mr Shaun Laffey Ex-officio: Financial Controller.

### Davis Carr Cancer Society Endowment Trust

Mr Brian Stevenson (Chair), Mr Nigel Brown, Mr Murray MacCormick, Mr Chris Blincoe, Mrs Leah Watson QSM, Mr Chris Horton Ex-officio: Financial Controller, Manager Fundraising.

### Northland Regional Committee

Leah Watson QSM (Mid North) (Chair), Mr Kim Allen (Kaipara), Mrs Lee Iwashita (Whangarei), Mrs Elizabeth Morgan QSM, JP, (Whangarei), Mrs Mary Carthew (Whangarei), Mrs Ada Brown (South Hokianga), Mrs Jane Howes (North Hokianga), Mrs Marie Berghan (Far North) Ex-officio Manager Northland.

### Medical Advisory Committee

Professor Peter Browett (Chair), Dr Tim Christmas, Associate Professor Jonathan Koea, Dr John Matthews, Professor Randall Morton, Dr David Scollay, Mr John Whittaker.

### Research Advisory Committee

Mr Nigel Brown (Chair), Mr Shaun Laffey, Dr Paul Thompson Ex-Officio: Professor William Denny ONZM, Professor Bill Wilson, Professor Mark McKeage.

### Health Promotion Advisory Committee

Dr Tom Marshall OBE (Chair), Mr Mac Leauanae Ex-officio: Manager Health Promotion.

### Supportive Care Advisory Committee

Mr Alex Ng (Chair), Mr Bruce Macdonald Ex-officio: Manager Supportive Care

### Building and Development Sub-Committee

Mr Nigel Brown (Chair), Mr Shaun Laffey

• N.B. The President and Chief Executive are ex-officio members on all Advisory Committees.

### Life Members

The Honourable Justice Cooper, Mr Michael Horton CNZM, Mr Russell McIlroy, Mr Carrick Davidson, Mrs Joan Swift QSM JP, Mr Murray MacCormick, Mrs Anne Sinclair.

## Viv Jone's Story

Viv and her husband Pete have been travelling down from Paihia and staying at Domain Lodge on and off for the past 2 years. "Being diagnosed with stage four cancer bowel cancer came as such a shock. We used up a lot of savings to pay for specialised treatment and there was so much to deal with both on an emotional and financial level. We couldn't believe it when we asked how much it was going to cost to stay at Domain Lodge, and we were told it was free! It was such a huge relief we felt quite overwhelmed."

"The whole service is wonderful, so well located and very comforting."



Viv Jones, Paihia

# Thanks To Our Community

## Auckland Northland

During 2013/2014 funds were received from the following sources:

**Donors:** A special thank you to those in the community who continue to value the work of the Cancer Society. Your gifts, whether donating on Daffodil Day, sending a gift of support by mail or supporting a fundraiser with an online donation are deeply appreciated. Donors are the life-blood of the Cancer Society and without them our work would not be possible.

**Bequests:** Bequests continue to be the largest single source of income, with **\$5.0 million** left in Wills during the year. Much of our work continues today thanks to the generosity of those who chose to remember the Cancer Society in their Will, and in doing so joined the Circle of Hope.

**Daffodil Day:** Last year Daffodil Day raised nearly **\$900k** in the Auckland Northland region. This event is made possible with the dedication and energy of over **2,000 volunteers** who help deliver the street appeal. ANZ support Daffodil Day through their own events and branch participation – we are grateful for this amazing on-going support.

**Trusts and Foundations:** Trust and Foundation grants amounted to just over **\$500k** in support of core services of Cancer Society; We are tremendously grateful to the Trusts and Foundations who have awarded grants to the Cancer Society, in particular Lion Foundation for the **\$360,000** grant in support of the Society's Community Liaison Nursing Service. (Trusts and Foundations listed over the page).

**Relay For Life:** Collectively our Relay For Life Teams raised over **\$430k** across two events. Over **200** teams in both Whangarei and at the North Shore's Millennium, made the Relay For Life event a great success. Thanks to the commitment of our teams, local organisations, supporters, Ezibuy, Soar Print and Media Works.

**The Ride to Conquer Cancer:** The inaugural Ride to Conquer Cancer was held in November in Auckland. The event raised nearly **\$2.3 million** which will go towards funding cancer research. We are grateful to all of the riders and volunteers for their participation in the weekend.

**Community Fundraisers:** Community Fundraisers continue to generate substantial funds for the Cancer Society. Last year inspirational people within our community raised over **\$465k** (including general donations) from a variety of fundraising activities. Included in these activities was the Wesfarmers Annual Golf Day.

The Cancer Society is an independent non-government organisation reliant on donations and bequests to provide our services free of charge. We are ever grateful for the support given throughout the year.

**NZ House & Garden Tours:** NZ House & Garden Tours took place in the Auckland area, including Clevedon for the first time, with **10** of the city's most spectacular houses & gardens on show. This was part of a national event, that also took place in Canterbury, Queenstown and Kapatu Coast, with the ticket proceeds shared equally between Look Good Feel Better and Cancer Society.

**Candida:** Thanks also to Candida who have generously supplied envelopes at a heavily discounted rate for all Cancer Society Divisions.

**Ryman Healthcare:** The Cancer Society was thrilled to be chosen by Ryman Healthcare as its charity partner in May 2013. We are very grateful for the fundraising support provided by Ryman Healthcare villages throughout NZ, with various fundraising activities and donations that clients, staff and members of the public have provided. All villages supported the Cancer Society's Daffodil Day flagship appeal last August and chose to partner the Society in hosting and delivering the inaugural New Zealand's Biggest Morning Tea.





# Trusts And Foundations

Thanks to the following Trusts and Foundations who have provided vital funding towards the work of the Cancer Society – many grants are received from philanthropic family trusts as well as local community organisations.

- Barbara Florence Gillies Charitable Trust
- The Lion Foundation
- Infinity Foundation Limited
- COGS Manukau
- COGS Whangarei/Kaipara
- NZ Lottery Grants Board (Auckland)
- A K Franks Charitable Trust
- NZ Post Community Post
- Martha Helen Baldwin Trust
- Pelorus Trust
- COGS Waitakere
- The Trusts Community Foundation
- The James Russell Lewis Trust
- Ted & Mollie Carr Endowment Trust
- COGS Papakura Franklin
- Mt Wellington Foundation Ltd
- A J Scott Fund
- The North & South Trust Limited
- New Zealand Community Trust
- Oxford Sports Trust
- Constellation Communities Trust Limited
- Auckland Council Community Group
- L W Nelson trust
- The Strathlachlan Fund
- NR & JH Thomson Charitable Trust
- W & W A R Fraser Charitable Trust
- Joan Mayes Trust
- The Owen & John Whitfield No 1 Fund Charitable Trust

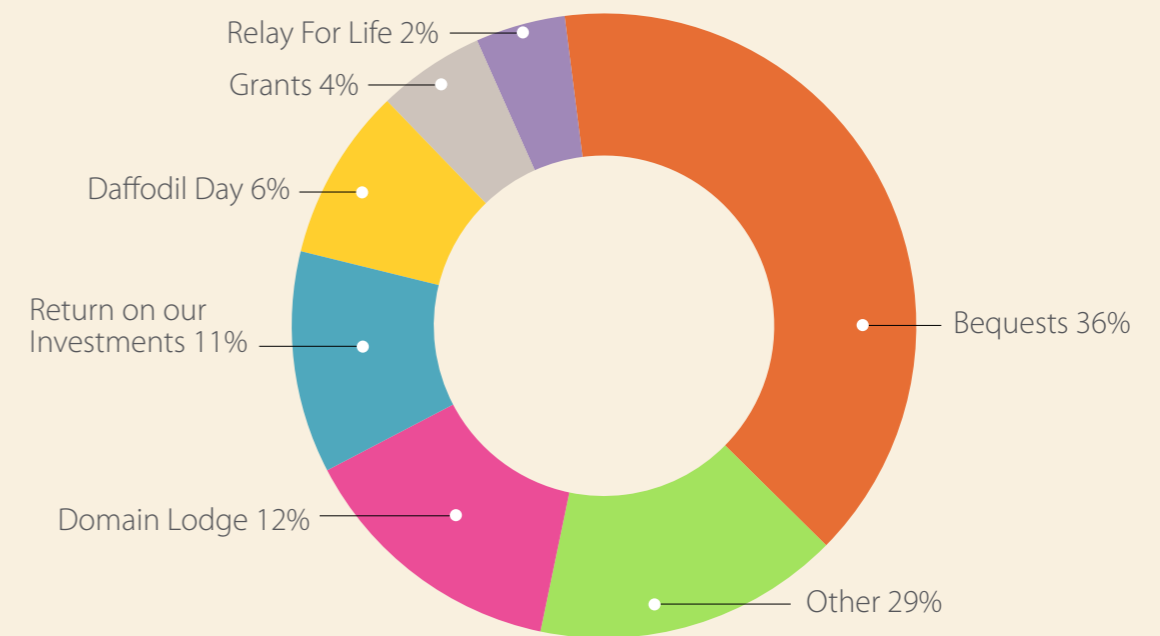
## Davis Carr Cancer Society Endowment Trust

The Davis Carr Cancer Society Endowment Trust received \$298,000. These funds are not immediately spent but invested prudently to ensure the long term future of Domain Lodge and the core patient Supportive Care Services.

# Fund Income And Allocation

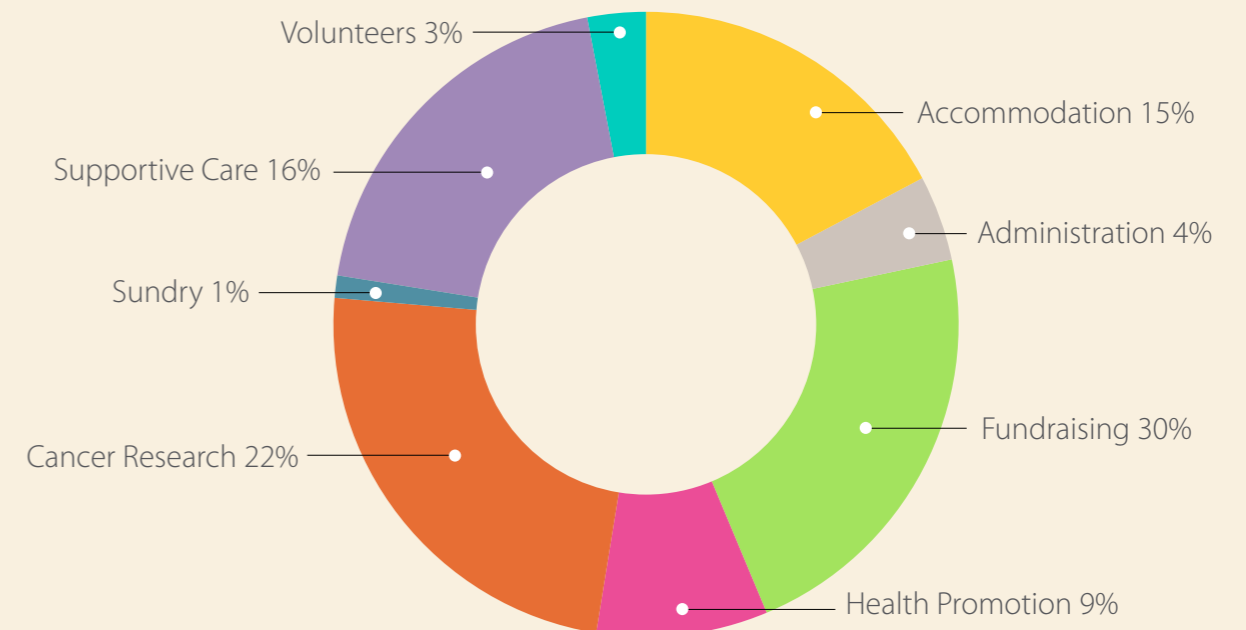
How We Raise Funds: New Zealanders continue to generously support those causes close to their hearts. We are ever grateful for the support offered to the Cancer Society from our generous donors.

Funds received 2013/2014 came from:

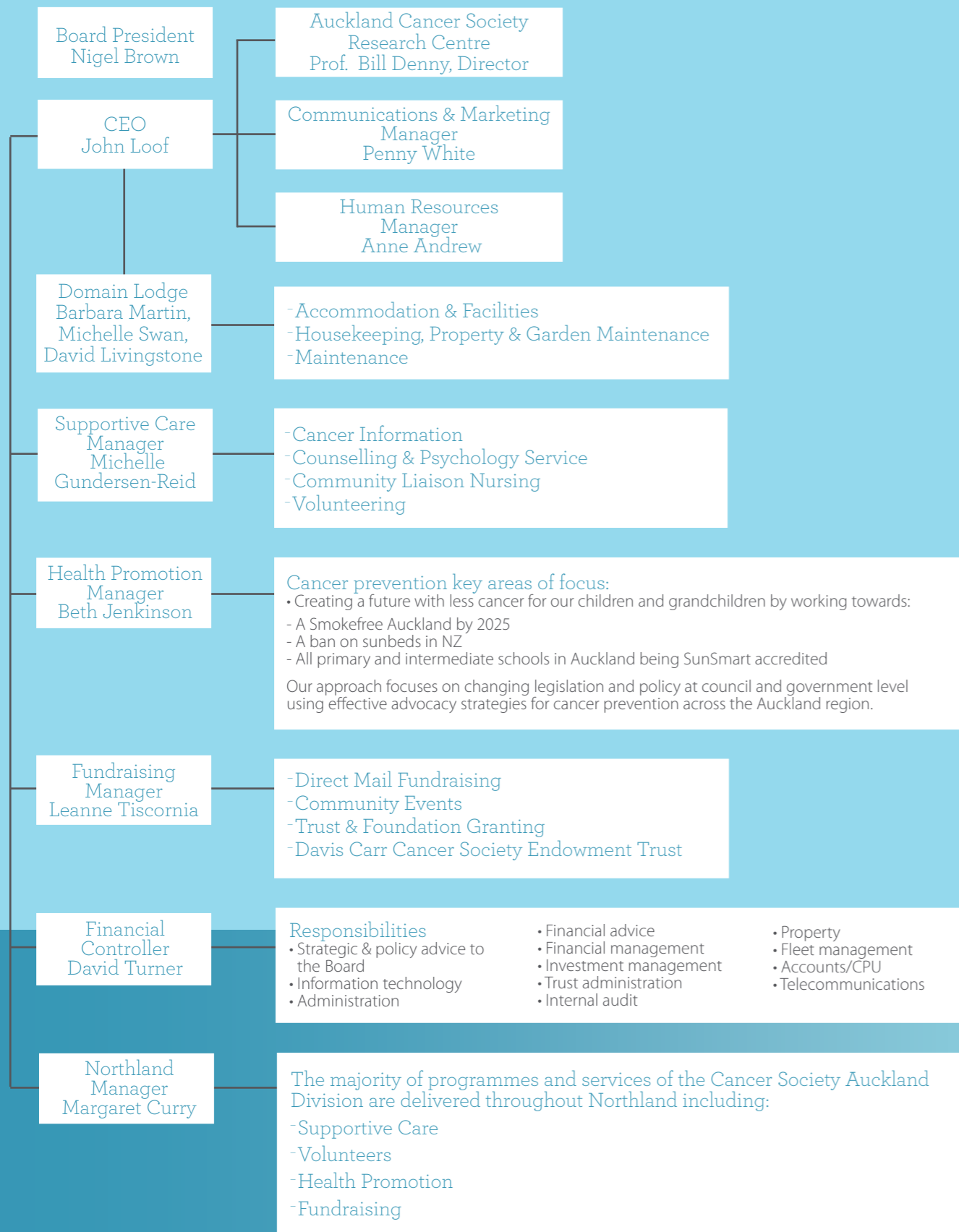


How We Use Funds: Each year we spend approximately **\$3.5 million** on supporting cancer patients and fund nearly **\$2.5 million** on cancer research.

Through fundraising and support from the community we are able to deliver the following services:



# Cancer Society of New Zealand Auckland Inc. Organisational Structure



# Summary Financial Statements

Cancer Society of New Zealand Auckland Division Incorporated

## Summary

This is a summary of the Cancer Society of New Zealand Auckland Division Incorporated's financial statements for the year ended 31 March 2014. The information was extracted from the full financial statements as audited by BDO Auckland, which were approved by the board on 17 June 2014. The audit report was qualified in the full financial statements in respect of certain donation income. This qualification is referred to in the Audit Report attached to these financial statements. Those full financial statements comply with Generally Accepted Accounting Practices in New Zealand (NZ GAAP). They comply with the New Zealand equivalents to International Financial Reporting Standards (NZ IFRS) and other applicable Financial Reporting Standards, as appropriate for public benefit entities. The accounts are available on application to the Society at PO Box 1724 Shortland Street Auckland, or can be found online at [www.cancersocietyauckland.org.nz](http://www.cancersocietyauckland.org.nz).

The summary financial statements have been prepared in accordance with FRS-43: Summary Financial Statements. They cannot be expected to provide as complete an understanding as provided by the full financial report.

The presentation currency is New Zealand dollars. All amounts are stated in \$000s.

	Group 2014 \$(000)	Group 2013 \$(000)	Parent 2014 \$(000)	Parent 2013 \$(000)
--	--------------------------	--------------------------	---------------------------	---------------------------

### Summary statement of comprehensive income

For the year ended 31 March 2014

Revenue from public support	10,626	8,190	10,328	7,756
Revenue from Domain Lodge	1,577	1,564	1,577	1,564
Financial revenue	1,228	995	744	689
Other revenue	351	362	666	706
<b>Total revenue</b>	<b>13,782</b>	<b>11,111</b>	<b>13,315</b>	<b>10,715</b>
Administration expenses	2,685	2,633	2,618	2,574
Research costs	2,467	2,271	2,467	2,271
Support service expenses	2,168	2,083	2,168	2,083
Domain Lodge expenses	1,322	1,293	1,322	1,293
Fundraising and promotion costs	3,408	1,876	3,408	1,876
Health Promotion costs	472	380	472	380
<b>Total expenses</b>	<b>12,522</b>	<b>10,536</b>	<b>12,455</b>	<b>10,477</b>
<b>Surplus/(deficit) for the year</b>	<b>1,260</b>	<b>575</b>	<b>860</b>	<b>238</b>
Net Change in the fair value of financial assets	111	821	(88)	58
<b>Total comprehensive income for the period</b>	<b>1,371</b>	<b>1,396</b>	<b>772</b>	<b>296</b>

### Summary statement of changes in equity

For the year ended 31 March 2014

Opening balance	37,482	36,086	27,810	27,514
Total comprehensive income for the period	1,371	1,396	772	296
Closing balance	<b>38,853</b>	<b>37,482</b>	<b>28,582</b>	<b>27,810</b>

### Summary statement of financial position

As at 31 March 2014

Current assets	8,427	8,213	8,409	8,209
Non current assets	31,533	30,389	21,254	20,700
<b>Total assets</b>	<b>39,960</b>	<b>38,602</b>	<b>29,663</b>	<b>28,909</b>
Current liabilities	1,040	1,120	1,014	1,099
Non current liabilities	67	-	67	-
<b>Total liabilities</b>	<b>1,107</b>	<b>1,120</b>	<b>1,081</b>	<b>1,099</b>
<b>Net assets</b>	<b>38,853</b>	<b>37,482</b>	<b>28,582</b>	<b>27,810</b>
<b>Total equity</b>	<b>38,853</b>	<b>37,482</b>	<b>28,582</b>	<b>27,810</b>

### Summary statement of cash flows

For the year ended 31 March 2013

Net cash from operating activities	2,111	1,157	1,785	874
Net Cash from Investing Activities	(1,868)	(696)	(1,542)	(413)
<b>Net increase (decrease) in cash and cash equivalents</b>	<b>243</b>	<b>461</b>	<b>243</b>	<b>461</b>
Cash and cash equivalents at the beginning of the year	1,922	1,461	1,922	1,461
<b>Cash and cash equivalents at the end of the year</b>	<b>2,165</b>	<b>1,922</b>	<b>2,165</b>	<b>1,922</b>

# Audit Report



BDO AUCKLAND

## REPORT OF THE INDEPENDENT AUDITOR ON THE SUMMARY FINANCIAL STATEMENTS TO THE MEMBERS OF CANCER SOCIETY OF NEW ZEALAND AUCKLAND DIVISION INCORPORATED

The accompanying summary financial statements, which comprise the consolidated and separate summary statements of financial position as at 31 March 2014, and the consolidated and separate summary statements of changes in equity, and summary statements of comprehensive income, and summary statements of cash flows for the year then ended, are derived from the audited financial statements of Cancer Society of New Zealand Auckland Division Incorporated and Group for the year ended 31 March 2014. We expressed a qualified audit opinion on those financial statements in our report dated 17 June 2014. Those financial statements, and the summary financial statements, do not reflect the effects of events that occurred subsequent to the date of our report on those financial statements.

The summary financial statements do not contain all the disclosures required for full financial statements under generally accepted accounting practice in New Zealand. Reading the summary financial statements, therefore, is not a substitute for reading the audited financial statements of Cancer Society of New Zealand Auckland Division Incorporated and Group.

#### The Board's Responsibility for the Summary Financial Statements

The Board is responsible for the preparation of the summary of the audited financial statements in accordance with FRS-43: *Summary Financial Statements*.

#### Auditor's Responsibility

Our responsibility is to express an opinion on the summary financial statements based on our procedures, which were conducted in accordance with International Standards on Auditing (New Zealand) (ISA (NZ)) 810 "Engagements to Report on Summary Financial Statements".

Other than in our capacity as auditor we have no relationship with, or interests in, Cancer Society of New Zealand Auckland Division Incorporated or any of its controlled entities.

#### Opinion

In our opinion, the summary financial statements derived from the audited financial statements of Cancer Society of New Zealand Auckland Division Incorporated and Group for the year ended 31 March 2014 are consistent, in all material respects, with those financial statements, in accordance with FRS-43.

Our opinion on the audited financial statements was a qualified opinion based on the fact that control over income from Daffodil Day and Relay for Life donations of \$1,295,602 (2013: \$1,530,256), prior to being recorded is limited, and there are no practical audit procedures to determine the effect of this limited control.

#### Our qualified audit opinion states that

- except for the possible effects of the matter described above, those financial statements comply with generally accepted accounting practice in New Zealand and present fairly, in all material respects, the results of the Society's and the Group's financial performance and cash flows for the year ended 31 March 2014.
- those financial statements present fairly, in all material respects, the financial position of Cancer Society of New Zealand Auckland Division Incorporated and Group as at 31 March 2014.

*BDO Auckland*

BDO Auckland  
11 August 2014  
Auckland  
New Zealand

# Annual Report Supplement Q & A

## What is the 'Group' and the 'Parent'?

In our financial summary 'Group' represents both The Davis Carr Cancer Society Endowment Trust and the Cancer Society Auckland Division. The 'Parent' represents solely the Cancer Society Auckland Division.

## How much income was generated?

In 2012/13 the Cancer Society Auckland Division generated a total income of **\$13.8m** of which **\$10.6m** was from fundraising.

## What were the main areas of income?

The Society was fortunate to secure **\$5m** in income from bequests and we are incredibly grateful to those individuals who have had the foresight to support us in this way. Thanks to the efforts of many 1000s of people we were also able to record excellent results on Daffodil Day and at our Relay For Life events.

## How much did you spend on Supportive Care services and Cancer Research?

Our mission is to reduce the incidence and impact of cancer and we were delighted to be in a position where we could spend a total of **\$3.5m** on offering information, support and accommodation to people affected by cancer in Auckland and Northland, and **\$2.5m** on research being carried out at the Auckland Cancer Society Research Centre, as well as other research.

## Why do you have reserves?

In recent times the Board authorised use of funds held in reserve to underpin our core services and programmes. Thanks to prudent financial management over many years we were fortunate to be able to utilise reserves rather than apply cut backs to our work. We feel proud that we were able to maintain our commitment to our community.

## How much did it cost to operate the organisation?

It cost **\$12.5m** to provide the wide range of services and facilities. The two largest areas of expenditure were supportive care services and cancer research.

## What is the Endowment Trust?

The Davis Carr Cancer Society Endowment Trust was formed to diversify and create a sustainable source of income. It is an opportunity for individuals and organisations who wish to make a gift that is held in perpetuity. Through prudent investments these gifts provide enduring support and income that will help sustain the annual operating costs of Domain Lodge and our on-site support services. While the Endowment Trust is a separate entity, its financial results are consolidated with ours because we appoint the majority of its Trustees.

## How much does it cost you to fundraise?

In **2013/14** we raised **\$10,625,901** at a cost of **\$3,408,263** fundraising. This equates to a cost of just 0.32 cents in the dollar which compares favourably with industry standards.

## How is Cancer Society New Zealand funded?

Each division of the Cancer Society contributes an annual levy towards the work of the national office which represents the unified voice of the Cancer Society. This work includes national activities, policy development, advocacy and campaigns.



## Contact details:

### Auckland

Domain Lodge  
1 Boyle Crescent, Grafton  
PO Box 1724, Shortland St  
Auckland 1140  
Phone 09 308 0160  
Fax 09 308 0175  
info@akcansoc.org.nz  
www.cancersocietyauckland.org.nz  
facebook/cansociety

### Northland

Daffodil House  
73 Kamo Rd  
PO Box 8100, Kensington  
Whangarei 0145  
Phone 09 437 5593  
Fax 09 437 5602  
Toll free 0800 366 066  
northland@akcansoc.org.nz  
www.cancersocietynorthland.org.nz

### Auckland Cancer Society Research Centre

Faculty of Medical & Health Sciences  
University of Auckland  
Private Bag 92019  
Auckland  
Phone 09 373 7599  
Fax 09 373 7502



# Cancer Society

Te Kāhui Matepukupuku  
o Aotearoa

---

AUCKLAND DIVISION